



LUSIVE MEETS JEREMY

At Lusive we've produced our fair share of guest room projects throughout the years — one of our favorites being the eclectic Jeremy Hotel in West Hollywood. Located on the corner of La Cienega and Sunset Boulevard, The Jeremy resides in a neighborhood that houses some of the most prestigious hotels in LA; but with its modern style and sophisticated touches, The Jeremy manages to stand out from the rest.

When Lusive took on the job of producing the array of midcentury-modern-meets-industrial-inspired wall sconces, pendant lights, and table and floor lamps for the project, we understood the importance of the impeccable fabrication of these deceptively 'simple' pieces in order to elevate the aesthetic of each guest room.

A challenge we embraced with open arms.



CASE STUDY: THE JEREMY HOTEL



LUSIVE



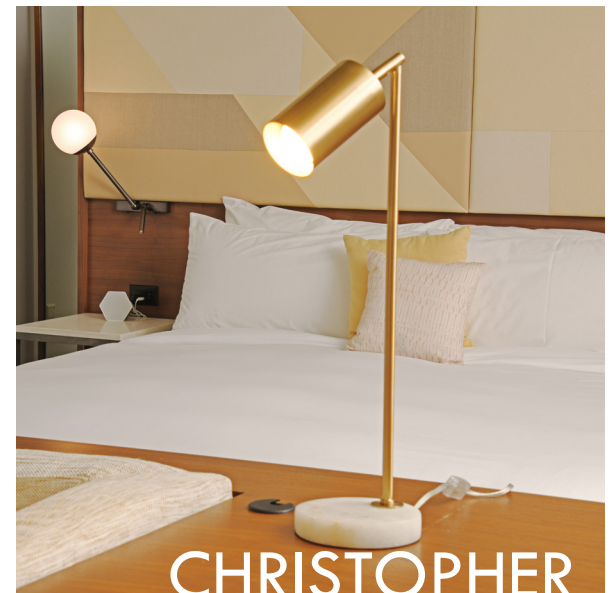
METRO



MARSDEN



LAWRENCE



CHRISTOPHER



RAYMOND



MADISON



INSPIRATION

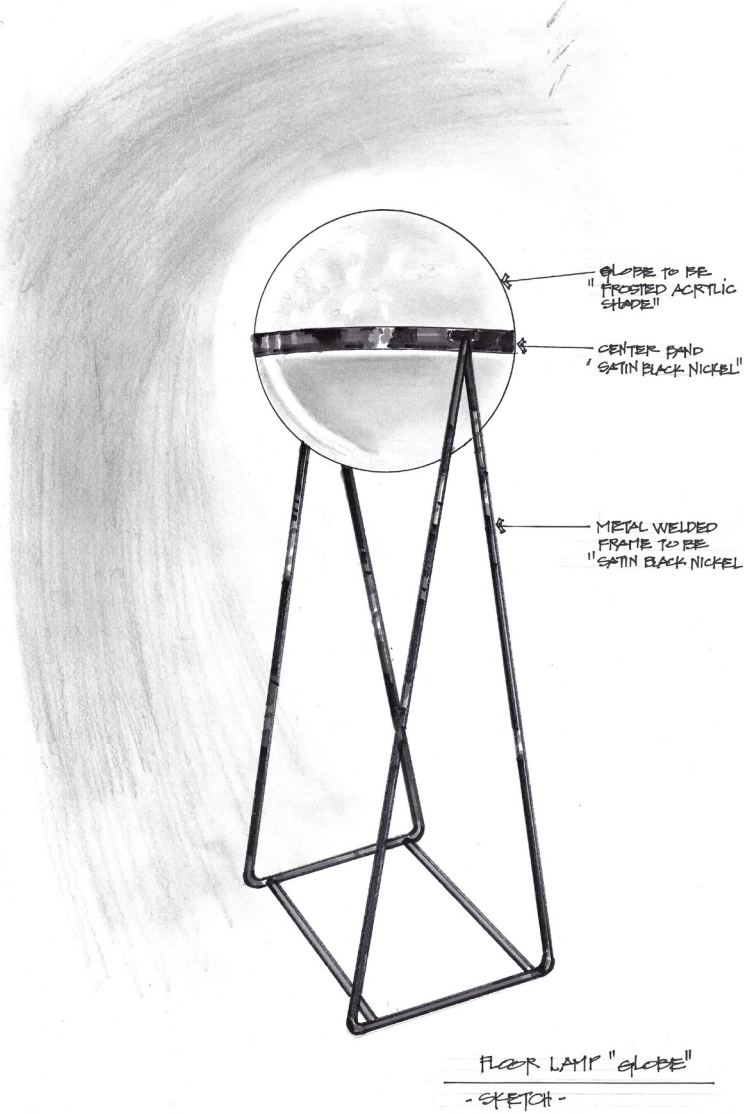
CREATION

REALIZATION

Clean. Striking. Sophisticated.

This charming West Hollywood boutique hotel presents a remix of iconic Hollywood style and contemporary design through a streamlined hybrid of midcentury-modern and industrial aesthetics. The project exudes a muted sophistication that requires bold yet refined lighting fixtures in order to compliment the eclectic palette.

Void of any excessive grandeur, the fixtures at The Jeremy are a combination of simplistic design with quality finishes that create a sense of modern urban luxury - with materials such as ceramic, frosted acrylic, polished brass, and satin black nickel as the primary touch points throughout the design process.



Producing multiple uniquely custom fixture types for 286 signature rooms - including 50 suites - requires coordination, stellar communication and the ability to problem solve through the process. Often the simplest details create the biggest challenges in engineering, materials or technology – the assumption that simple design equals easy construction can sometimes be farthest from the actual truth.

With their clean lines and no-frills design, the fixtures for The Jeremy needed to be expertly crafted as any flaws would be glaringly obvious from the onset. But as with all of our projects, the team at Lusive approached these pieces with the knowledge and care to ensure that each and every final product found throughout the guestrooms assisted in telling the visual story of the space with stellar quality.

Through Lusive's attention to detail and constant striving to deliver the finest product on schedule, the lighting fixtures found throughout the guest rooms at The Jeremy are a true representation of the designer's vision. With their modernized subtlety, each masterfully crafted piece adds to the distinctive layering of the midcentury-modern-meets-industrial-inspired aesthetic that runs throughout the interiors.

In the end, the finished product for The Jeremy ended up being a cohesive collection of lighting that's an integral part of the overall guest experience, a mix of practical application and inspired design that places the boutique hotel in a category all its own.

